

NORTH DAKOTA FARMERS UNION PRESENTS

# DULUTH FALL FOLIAGE

SEPTEMBER 16-21, 2024



DULUTH, MN

Autumn is a beautiful time of year filled with the memories of messy hands carving pumpkins into lanterns and long walks in the orange twilight with the crunch of leaves underfoot, reminding us to hold on to what we love and let go of what we don't need.

Come join us for a **week-long memorable trip** through the beautiful midwestern forests during this lovely, ephemeral time. Take in the beautiful **sights of nature** while exploring the local **communities** along the way.



[NDFU.ORG/TOURS](https://www.ndfu.org/tours)

(800) 366-6338

[TRANSPORTATION@NDFU.ORG](mailto:TRANSPORTATION@NDFU.ORG)

# OVERVIEW OF ATTRACTIONS



## ***JUDY GARLAND MUSEUM***

Grab the family and “Follow the Yellow Brick Road” to **Grand Rapids, Minn.** The Judy Garland Museum® is home to an eclectic Judy Garland and Wizard of Oz collection, Judy’s 1920’s restored Birthplace Home, the Children’s Discovery Museum, on 2 acres of Minnesota beauty. The Museum hosts **thoughtfully curated exhibits and artifacts**, including the original carriage featured in “The Wizard of Oz,” a Dorothy Gale test dress worn by Judy Garland, and many personal **Judy Garland items** collected over the last 40 years. Don’t forget to take home a souvenir at the museum store!



## ***LAKE SUPERIOR MARINE MUSEUM***

Operated by the U.S. Army Corps of Engineers and located in **Duluth, Minn.**, the Lake Superior Marine Museum is the **most visited marine museum on the Great Lakes**. Exhibits and programs include information on upper lakes commercial shipping, the Duluth Ship Canal and Aerial Bridge, three replica cabins, a two-story steam engine, 50 scale models and lots of interactive displays. The exhibits are updated frequently, offering visitors a unique experience each time they attend.



*Please note that the attractions listed here are not exclusive. There may be additional attractions included in the cost of the Duluth Fall Foliage Tour that are not listed here. The exact itinerary is subject to change based on weather conditions and attraction availability.*



## ***SPLIT ROCK LIGHTHOUSE***

A November gale that wrecked nearly 30 ships in 1905 prompted this rugged landmark's construction. When the U.S. Lighthouse Service completed **Split Rock Light Station** in 1910, it soon became one of Minnesota's best known destinations. Nestled in a **Minnesota State Park**, Split Rock Lighthouse is one of the **most photographed and visited spots in the state**, with a drama-filled history and breathtaking views.

## ***GOOSEBERRY FALLS***

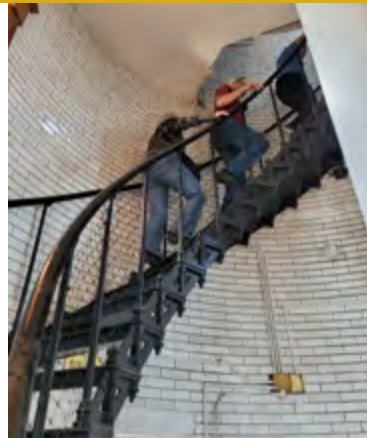
This popular **North Shore** park features spectacular waterfalls, scenic overlooks, a wonderful visitor center and superb trout fishing. Be sure to take in an **interpretive program** to learn more about the history, geology and wildlife of the North Shore. The park has a campground, 20 miles of hiking trails, cross-country skiing, and snowmobile trails. Trails run along the Gooseberry River, through **aspen, cedar, spruce and pine forests**.



## ***LAKE SUPERIOR RAILROAD MUSEUM***

Voted the "**BEST Transportation Museum in America**," the Lake Superior Railroad Museum is a **family friendly destination** for railroad enthusiasts and historians, young and old. The collection includes the **world's most powerful steam locomotives**, the first steam engine in Minnesota, one of the nation's largest displays of dining car china, cabooses, freight cars, a railway post office and much more! The museum is housed in the historic Union Depot in **downtown Duluth**.

## ***PICTURES FROM THE 2023 DULUTH FALL FOLIAGE TRIP***



# DULUTH FALL FOLIAGE

September 16-21, 2024

Please note that most attractions will require active participation and walking!



2023 DULUTH TOUR GROUP



NDFU'S DRIVER & GUIDE\*

Return this form and your \$100 deposit per person to the mailing address below:

North Dakota Farmers Union  
Transportation Department  
PO Box 2136  
Jamestown, ND 58402-2136

If you prefer, you can email the form to [transportation@ndfu.org](mailto:transportation@ndfu.org) and make your payment over the phone: (800) 366-6338.

FILL THIS FORM OUT ONLINE!



\*Driver: Josh Geinert | Guide: Yvonne Engelhart

## TRIP POLICIES

### CANCELLATION POLICY

- Full refunds are issued if cancellations occur 45 days or more prior to departure.
- A refund of 50% is issued for cancellations that occur less than 45 days prior to departure.
- NO refund will be issued for any cancellations that occur 14 days or less prior to departure.

### TRAVEL INSURANCE

Reference our website at [ndfu.org](http://ndfu.org) for more information about travel insurance through TME Travel Insurance or scan the QR Code.



### IMPORTANT!

- Our drivers are CPR, AED & First Aid certified.
- The exact itinerary is subject to change based on weather conditions and attraction availability.

### NDFU MEMBERSHIP

A current NDFU membership is required to attend. The cost is \$30 per family per year.

### TRAVEL RESTRICTIONS

Please be advised that certain COVID-19 travel restrictions may vary in different cities, regions and states. NDFU travel groups must be in compliance.

## TRAVELER INFORMATION

Traveler 1 \_\_\_\_\_ YOB \_\_\_\_\_

Email \_\_\_\_\_

Cell \_\_\_\_\_

Phone \_\_\_\_\_

Traveler 2 \_\_\_\_\_ YOB \_\_\_\_\_

Traveler 3 \_\_\_\_\_ YOB \_\_\_\_\_

Traveler 4 \_\_\_\_\_ YOB \_\_\_\_\_

Mailing Address \_\_\_\_\_

City/State/Zip \_\_\_\_\_

## TRIP PAYMENT

Cash Name on Card \_\_\_\_\_

Check Card # \_\_\_\_\_

Credit Card Exp \_\_\_\_\_ CVV \_\_\_\_\_

## TRIP INFORMATION

- Trip cost includes luxury motor coach transportation, hotels for six days and five nights in addition to six paid meals and all included attractions.
- There are 14 attractions/events on this tour including:
  - Judy Garland Museum
  - Lake Superior Marine Museum
  - Tom's Logging Camp
  - Gooseberry Falls
  - Split Rock Lighthouse
  - CHS Loading Docks
  - Veterans Museum
  - Vista Cruise
  - Glensheen Mansion
  - Zepher Train Tour
  - Great Lakes Aquarium
  - Miller Hill Mall
  - Enger Park Scenic Drive
  - Back Forty Flower Farm

## ACCOMMODATIONS

- Single (\$1,800) Roommate's Name \_\_\_\_\_
- Double (\$1,400) (if outside immediate family) \_\_\_\_\_
- Triple (\$1,250) \_\_\_\_\_
- Quad (\$1,150)  One Bed (if available)
- costs are per person  Two Beds

## PICK-UP LOCATIONS

- Jamestown  Bismarck  Fargo

For information on other trips, go to [ndfu.org/tours](http://ndfu.org/tours)  
Call us at (800) 366-6338 or email us at [transportation@ndfu.org](mailto:transportation@ndfu.org)