



**FREE  
AIRFARE**

See back for details

**11 DAY RIVER CRUISE HOLIDAY**

Including two nights in  
Lucerne, Switzerland

# Tulip Time on Jewels of the Rhine

Switzerland • France • Germany • the Netherlands

**Tour Dates:** April 14 - 24, 2021

  
**Mayflower**  
CRUISES & TOURS

# Tulip Time on Jewels of the Rhine

**11 Days • 23 Meals** Enjoy a relaxing and inspiring cruise on the Romantic Rhine, Europe's longest river. Travel onboard a luxurious river ship, during tulip time, visiting iconic ports of call, sampling incredible cuisine, and absorbing the local culture.

## EXCEPTIONAL INCLUSIONS

- ❖ **23 Meals:** 9 breakfasts, 6 lunches and 8 dinners
- ❖ **Airport transfers** on tour dates when air is provided by Mayflower Cruises & Tours
- ❖ Visit **four countries**
- ❖ Two-night **hotel stay and touring in Lucerne**
- ❖ **Seven-nights in a suite or stateroom** of your choice onboard the vessel
- ❖ **First-class service** by an English-speaking crew
- ❖ **All gratuities included**
- ❖ Explore the magnificent **Keukenhof Gardens**
- ❖ **Shore excursions** with English-speaking local guides
- ❖ Visit **UNESCO World Heritage Sites**
- ❖ Personal **listening device** for shore excursions
- ❖ **All meals included** onboard
- ❖ Variety of **international cuisine**
- ❖ Complimentary **regional wines, beer and soft drinks** with onboard lunches and dinners
- ❖ **Onboard Activity Manager** will support all EmeraldACTIVE excursions and host daily onboard wellness activities, games, classes and evening entertainment
- ❖ Complimentary **bottled water** in your stateroom
- ❖ Complimentary **WiFi onboard**
- ❖ Complimentary **bicycles onboard** for use ashore
- ❖ All port charges included
- ❖ \$55 in **Mayflower Money**

## CRUISE AND HOTEL ACCOMMODATIONS

**Days Two and Three** – Hotel Europe or similar, Lucerne, Switzerland

**Days Four through Ten** – Aboard an Emerald Waterways Star-Ship

*Post cruise hotel stays available in Amsterdam. Call for details.*



Cross the Reuss River via the historic Chapel Bridge in Lucerne, Switzerland

### DAY 1 – Depart the USA

Today you'll depart the USA on your overnight flight to Zurich, Switzerland.

### DAY 2 – Zurich to Lucerne, Switzerland

Upon arrival in Zurich, transfer to your hotel in Lucerne to begin your Swiss adventure. The afternoon is at leisure to begin discovering your beautiful new surroundings. This evening, join your Mayflower representative and traveling companions for an included dinner at the hotel. **Meal: D**

### DAY 3 – City Tour of Lucerne

After breakfast, an included walking tour highlights the city's landmark, the famous 14th-century Chapel Bridge with its paintings of heroic town events, that crosses the Reuss River. See the 17th-century Renaissance Town Hall and town squares, all set amongst the beautiful backdrop of the Swiss Alps. The remainder of the day is at leisure. **Meal: B**

### DAY 4 – Optional Excursion: Mt. Pilatus/Embark in Basel

Before departing for your ship in Basel, the day is free to enjoy at leisure or join the morning optional excursion to Mt. Pilatus – a mountain overlooking Lucerne that offers a unique alpine experience! This afternoon, travel by motorcoach to Basel, Switzerland for embarkation on your Emerald Waterways luxury river cruise ship. This evening, join your fellow travelers for dinner onboard. **Meals: B, D**

### DAY 5 – Breisach, Germany

Today you have a choice to visit a typical Black Forest Village, full of charm, cuckoo clocks and other German specialities. Alternatively, take part in a guided hike along some of the Black Forest trails. **Meals: B, L, D**

**EmeraldPLUS:** Black Forest Cake demonstration and tasting

**EmeraldACTIVE:** Guided hike in the Black Forest





Enjoy seven-nights cruising along the Romantic Rhine River



Explore Heidelberg on an included excursion with wine tasting

### DAY 6 – Strasbourg, France

Once docked in Kehl, coaches await to take you across the river to Strasbourg, the capital city of the Alsace Region in France. Your guided walking tour includes the Grande Île, the historical city centre and UNESCO World Heritage Site. Known for its medieval black and white timber-framed buildings, old tanning houses, baroque sandstone buildings, canals and river locks, the city's star attraction is the cathedral, dominating the main square. **Meals: B, L, D**

**EmeraldPLUS:** Guided Tour of Strasbourg

### DAY 7 – Mannheim / Heidelberg, Germany

Continue upstream to the town of Mannheim, located at the confluence of the Rhine and Neckar Rivers. From there, travel by coach to Heidelberg where you have the opportunity to either visit the medieval town of Heidelberg on a walking tour, or take part in an active hike to Heidelberg Hill. **Meals: B, L, D**

**EmeraldPLUS:** Guided tour of Heidelberg with wine tasting

**EmeraldACTIVE:** Hike from Mount Königstuhl to Heidelberg

### DAY 8 – Koblenz, Germany

Cruise to the 2000-year-old town of Koblenz, which is situated at the confluence of the Rhine and Moselle Rivers. Enjoy a walking tour of Koblenz and visit the Ehrenbreitstein Fortress on the opposite side of the river. This fortress was part of the Prussian defenses against the French in the 19th century and later used as a headquarters for the American military during WWII. **Meals: B, L, D**

**DiscoverMORE:** Moselle & Cochem (Reichsburg) Castle Visit (additional expense)

### DAY 9 – Cologne, Germany

Cruise along the Rhine River to Cologne. Founded by the Romans, the city is one of Germany's oldest and famous for its magnificent World-Heritage listed gothic cathedral. After lunch onboard, join your local guide for an included walking tour of the city, touching on the historical charm of the Old Town. Traverse quaint alleyways and see historic monuments. The tour concludes at the cathedral, whose twin spires dominate the skyline. This evening, back onboard join your Captain for a farewell reception and dinner. **Meals: B, L, D**

### DAY 10 – Amsterdam, the Netherlands

This morning, depart by coach for an included visit to the Keukenhof Gardens. Discover why it's called the "Garden of Europe" as you admire gorgeous flowers at the peak of tulip season. Return to the ship in the afternoon to explore the city of Amsterdam at your leisure. **Meals: B, L, D**

**EmeraldPLUS:** A visit to Keukenhof Gardens

### DAY 11 – Amsterdam / USA

Bid 'auf wiedersehen' to Europe and return home with memories of life enriching experiences from your European adventure and cruise along the Rhine River during tulip time. **Meal: B**

*Itinerary is subject to change.*



Flowers and fragrances fill Keukenhof Gardens

# Seven nights accommodations aboard an Emerald Waterways Star-Ship

Built: 2014-2017 Speed: 15.5 mph Staterooms: 80 Suites: 12 Length: 443 ft. Crew: 47

## SUN DECK



## HORIZON DECK



## VISTA DECK

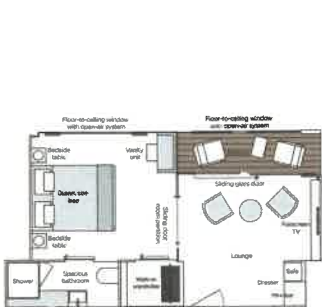


## RIVIERA DECK



### Public Areas and Ship Amenities

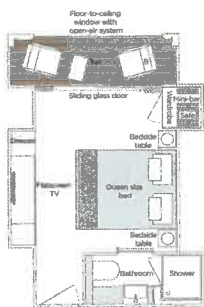
- 1 Sun Deck with Deck Chairs
- 2 Navigation Bridge
- 3 Sky Barbecue
- 4 Golf Putting Green
- 5 Games Area
- 6 Retractable Glass Roof
- 7 Walking Track
- 8 Daytime Pool & Bar / Evening Cinema
- 9 The Terrace
- 10 Horizon Bar and Lounge
- 11 Elevator
- 12 Reception
- 13 Wellness Area
- 14 Fitness Area
- 15 Reflections Restaurant
- 16 Hairdresser



**Owner's One-Bedroom Suite**

315ft<sup>2</sup>

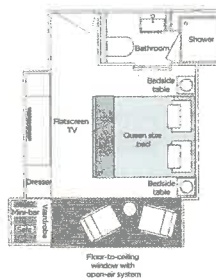
SA



**Grand Balcony Suite**

210ft<sup>2</sup>

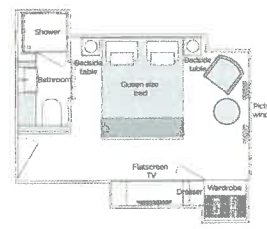
S



**Panorama Balcony Suite**

180ft<sup>2</sup>

A B C



**Emerald Stateroom**

162ft<sup>2</sup>

D E

### 2021 Departure Date: April 14

CATEGORY	DECK	PER PERSON TWIN RATE	SINGLE ROOM
E Emerald Stateroom	Riviera	\$4,399	add \$2,795
D Emerald Stateroom	Riviera	\$4,499	add \$2,859
C Panorama Balcony Suite	Vista	\$5,049	add \$3,219
B Panorama Balcony Suite	Vista	\$5,299	add \$3,379
A Panorama Balcony Suite	Horizon	\$5,499	add \$3,509
S Grand Balcony Suite	Horizon	\$5,899	N/A
SA Owner's One-Bedroom Suite	Horizon	\$6,699	N/A

### Travelers Protection Plan (TPP) for River Cruises - \$450 per person (optional)

This nonrefundable fee will provide a refund to you during the instance that you have to cancel your trip. The cancellation has to be for a covered reason (see Plan for details on coverage) and we have to be notified at least one day prior to departure. If you must leave the tour early due to personal illness or the illness or death of an immediate family member, TPP will provide a refund for any unused services after the departure of the tour. Other benefits include medical expenses for illness and injury, emergency transportation, 24 hour hot line and lost or stolen baggage assistance. Return air transportation is included ONLY if your air tickets are purchased through Mayflower Cruises & Tours. Please review the Plan for details on coverage.

Cancellation Charges Without Traveler's Protection Plan (TPP)

- 91 days or more ..... Deposit Amount
- 90 days to day of departure ..... 100% of the total tour
- No refund on unused portions of the tour

Plan and benefits offered and administered by Trip Mate, Inc.



Air itineraries may not be available until documents are received. Air seats are assigned by the airline for the entire group. Seat changes can only be attempted upon receipt of tickets and documents at which time availability may be limited. If specific seat assignments are vital to your reservation, we recommend individual air reservations rather than booking air with the group.

**FREE AIR thru March 31, 2020, LIMITED space available!**

Pricing includes round trip airfare out of Bismarck or Fargo, hotel transfers, land/cruise package, professional business manager and all gratuities to guides, drivers and ship staff.



FOR INFORMATION CONTACT:

**Jeff Willer**  
(701) 952-9111  
jwiller@ndfu.org

FOR RESERVATIONS CONTACT:

**Imelda**  
(630) 435-8264

imelda@mayflowercruisesandtours.com

